

Annual General Meeting

Monday 21 November 2022

juno
minerals 
limited

Disclaimer



IMPORTANT: Please read the following before continuing.

This Presentation has been prepared by Juno Minerals Limited ACN 645 778 892 (**Juno or the Company**) solely for information purposes. This Presentation has not been approved by any regulatory or supervisory authority. By accessing this Presentation, you agree to be bound by the following terms and conditions.

This Presentation is based on information available to the Company from sources believed to be reliable. None of the Company or any of their respective parent or subsidiary undertakings or affiliates, or any of their respective directors, officers, employees, advisers or agents (**Relevant Persons**) makes any representation that the information in this Presentation has been verified.

This Presentation does not constitute an invitation or offer to apply for securities and does not contain any application form for securities. This Presentation does not constitute an advertisement for an offer or proposed offer of securities. It is not intended to induce any person to engage in, or refrain from engaging in, any transaction. This Presentation does not and will not form part of any contract for the acquisition of securities.

This Presentation, including the information contained in this disclaimer, is not a prospectus and does not constitute an offer to sell, or the solicitation of an offer to buy, nor shall there be any sale of securities in any state or other jurisdiction in which such offer, solicitation or sale would be unlawful under applicable law, including the United States Securities Act of 1933, as amended (**US Securities Act**). Securities have not been registered under the US Securities Act or any US state securities laws and may not be offered or sold in the United States absent registration or an applicable exemption from registration under the US Securities Act and applicable state securities laws.

The Company has prepared this Presentation based on information available to it at the time of preparation. None of the Relevant Persons have independently verified the data contained in this Presentation. The information contained in this Presentation does not purport to be comprehensive. No representation or warranty is made as to the fairness, accuracy or completeness of the information, opinions and conclusions contained in this Presentation or any other information provided by the Company.

You cannot assume that the information in this Presentation will be updated at any time subsequent to the date on the cover of this Presentation. The distribution of this Presentation does not constitute a representation by any Relevant Person that the information will be updated at any time after the date of this Presentation. Except to the extent required by law, no Relevant Person undertakes to advise any person of any information coming to their attention relating to the financial condition, status or affairs of the Company or its related bodies corporate.

To the maximum extent permitted by law, the Relevant Persons are not liable for any direct, indirect or consequential loss or damage suffered by any person as a result of relying on this Presentation or otherwise in connection with it.

Statements of past performance: This Presentation includes information regarding the past performance of the Company. Investors should be aware that past performance is not indicative of future performance. Statements of numbers and financial performance: All financial amounts contained in this Presentation are expressed in Australian currency, unless otherwise stated. Any discrepancies between totals and sums of components in tables contained in this Presentation are due to rounding. Reporting of mineral resources and reserves: This Presentation includes mineral resource information prepared by "competent persons" in accordance with the Australasian Code for Reporting of Exploration Results, Mineral Resources and Ore Reserves (JORC Code). Where used in this Presentation, the terms "resource", "reserve", "proven reserves", "probable reserves", "inferred resources", "indicated resources" and "measured resources" have the meanings given to them in the JORC Code.

Forward-looking statements: This Presentation contains forward-looking statements concerning the Company's business, operations, financial performance and condition as well as the Company's plans, objectives and expectations for its business, operations, financial performance and condition. Any statements contained in this Presentation that are not of historical facts may be deemed to be forward-looking statements. You can identify these statements by words such as "aim", "anticipate", "assume", "believe", "could", "due", "estimate", "expect", "goal", "intend", "may", "objective", "plan", "predict", "potential", "positioned", "should", "target", "will", "would" and other similar expressions that are predictions of or indicate future events and future trends. These forward-looking statements are based on current expectations, estimates, forecasts and projections about the Company's business and the industry in which the Company operates and management's beliefs and assumptions. These forward-looking statements are not guarantees of future performance or development and involve known and unknown risks, uncertainties and other factors, many of which are beyond the Company's control. As a result, any or all of the forward-looking statements in this Presentation may turn out to be inaccurate. Factors that may cause such differences or make such statements inaccurate include, but are not limited to, the risk factors described in this Presentation. Readers of this Presentation are urged to consider these factors carefully in evaluating the forward-looking statements set out in this Presentation and are cautioned not to place undue reliance on such forward-looking statements. Unless required by law, the Company does not intend to publicly update or revise any forward-looking statements to reflect new information or future events or otherwise.

Agenda

1. CEO Presentation
2. Consideration of Reports and Questions
3. Resolutions and Poll Voting
4. Close

Company Overview

Independent
exploration
and
development
company

Two key iron ore projects in the
Yilgarn Region

Experienced
Board and
Management

A focus on
iron ore in the
Yilgarn region
of Western
Australia

Mount Mason DSO Hematite Project

5.9 million
tonnes @ 60.1%
Fe

Near “shovel-
ready”

Proximity to
existing
infrastructure

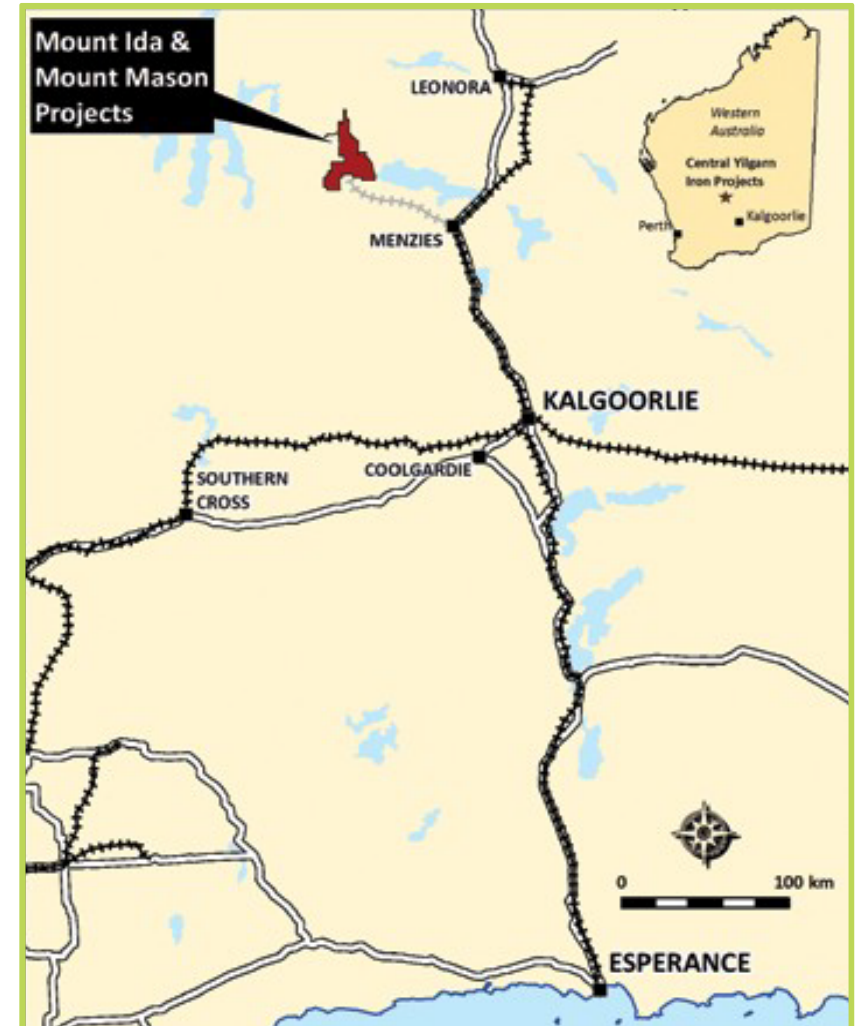
Mount Ida Magnetite Project

1.85 billion
tonnes @
29.48% Fe

Most
advanced
magnetite
project in the
Yilgarn

Board
representation
by supportive
Shareholders

Tiger Hill
Global Fund
AMCI
POSCO



Mount Mason DSO Hematite Project



130km by road northwest of the town of Menzies



Contracting strategy to minimise upfront capital costs and to reduce the development timeline



Resource occurs at surface, conventional open pit mining to produce a DSO Fines product



Project and Yundaga rail siding Statutory approvals received to allow development



Non-binding Indicative Track Pricing received from Arc Infrastructure for train path 1.35mtpa Yundaga to Esperance *



Discussions continue with Southern Ports Authority for access to spare capacity in the iron ore circuit at Esperance

Project Approvals

Mining Lease	M29/408 Mount Mason
Mining Proposal	Approved April 2022 for Mount Mason and the Yunndaga Rail Siding
Native Vegetation Clearing Permits	Mount Mason – approved April 2022 Yunndaga – approved December 2021
Works approval	Approved January 2022
Project Management Plan	Updated Risk Register and resubmitted February 2022
Mine Closure Plan	Approved July 2014 Update submitted to DMIRS November 2019
Environment Protection & Biodiversity Conservation Act	Malleefowl in project area – “Not a Controlled Action” Monitoring program agreed
Water Licence	Licence approved for 820,000kL p.a. until 2031

Mount Mason Mine Site



Project Implementation Strategy:

- Contracting packages tendered for:
 - Mining services;
 - Crushing services;
 - Access roads construction;
 - Cassini Village upgrade and expansion;
 - Mine Operations Centre;
 - Village facilities management;
 - Medical services; and
 - Requests for Pricing for DSO road haulage and all minor packages.
- Contract pricing initially for 1.00mtpa in 2021 and then for increased production at 1.35mtpa
- Contracts will be re-tendered upon Port access, favorable iron ore prices and a project FID

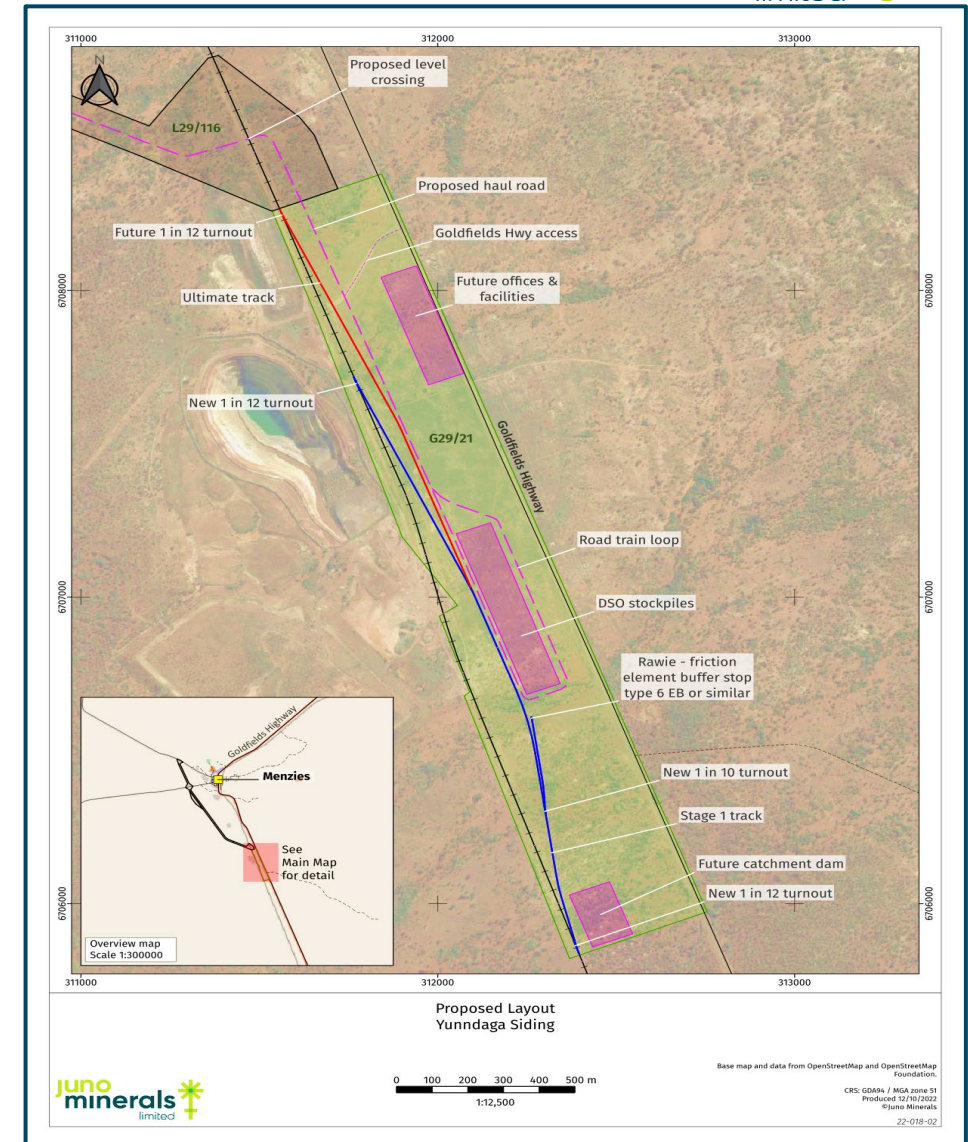
Revised Logistics

Route to Yunndaga Rail Siding

- New mine access and haul road constructed south to pick-up the Menzies NW Road, 28.2km
- Shire roads utilized will then be the Snake Hill and the Menzies - Evanstone roads
- New Menzies bypass road constructed to Yunndaga – 6.3km
- Road haul distance – 137km

Yunndaga Rail Siding

- New rail crossing to be constructed
- Geometric rail and feature survey completed early November 2022
- 85% design level now to commence for Arc Infrastructure approval
- Rail haul distance to Esperance – 508km



Mount Ida Magnetite Project



Large resource – 1.85 billion tonnes – of magnetic lower grade ore that can be beneficiated to produce a high-grade premium iron concentrate



100,000 metres drilling and significant metallurgical test work previously completed



Project is at a technically advanced stage



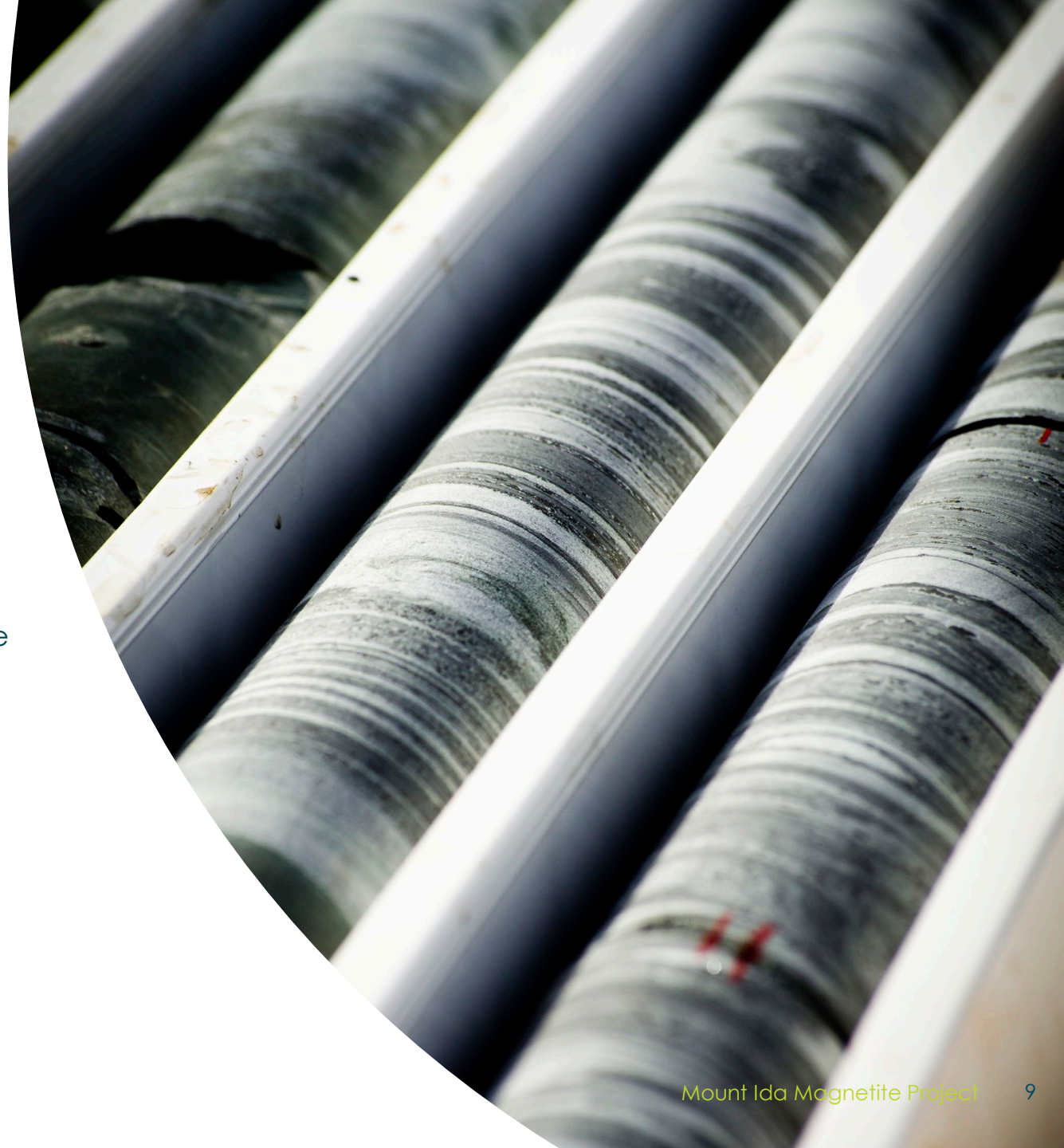
Granted mining lease



Significant tenure holding for infrastructure and water exploration



Potential to become a long-life tier one magnetite mine



Juno's Focus for FY2023

Mount Mason DSO Project

- Secure DSO capacity at Esperance Port
- Complete Yunndaga 85% design level to Arc Infrastructure's guidelines
- Upon favourable iron ore prices and stability returning to the market, a financial investment decision to develop the Project

Mount Ida Magnetite Project

- Attract a major partner to Joint Venture earning in at Project level
- JV objective to advance the Project to bring into development

Consideration of Reports and Questions

Resolution 1: Adoption of Remuneration Report

“That for the purposes of section 250R(2) of the Corporations Act and for all other purposes, the Remuneration Report contained in the Director’s Report for the financial year ended 30 June 2022 be adopted by the Company.”

FOR	71,084,115	98.91%
AGAINST	495,308	0.69%
ABSTAIN	11,145	-
OPEN	289,869	0.40%

Resolution 2: Election of Director – Mr David Moroney

“That for the purposes of Listing Rule 14.4, clause 7.3 of the Constitution and for all other purposes, Mr David Moroney, being a Director of the Company who retires in accordance with clause 7.3 of the Constitution and, being eligible, offers himself for election, be elected as a Director of the Company.”

FOR	68,236,694	93.41%
AGAINST	4,523,162	6.19%
ABSTAIN	31,478	-
OPEN	287,103	0.40%

Resolution 3: Election of Director – Mr Yilun Chen

“That for the purposes of Listing Rule 14.4, clause 7.3 of the Constitution and for all other purposes, Mr Yilun Chen, being a Director of the Company who retires in accordance with clause 7.3 of the Constitution and, being eligible, offers himself for election, be elected as a Director of the Company.”

FOR	72,655,428	99.46%
AGAINST	103,815	0.14%
ABSTAIN	32,091	-
OPEN	287,103	0.40%

Resolution 4: Amendment to Constitution

“That, for the purposes of section 136(2) of the Corporations Act and for all other purposes, approval is given for the Company to amend its existing Constitution to permit the Company to hold general meetings using virtual meeting technology as contemplated by section 249R(1) of the Corporations Act, in the manner set out in the Explanatory Statement, with effect from the conclusion of the Meeting.”

FOR	72,491,897	99.24%
AGAINST	265,770	0.36%
ABSTAIN	32,688	-
OPEN	288,082	0.40%

Resolution 5: Approval of Additional Placement Facility

“That, for the purposes of Listing Rule 7.1A and for all other purposes, approval is given to the Company to issue Equity Securities of up to 10% of the total issued share capital of the Company (at the time of issue or agreement to issue) calculated in accordance with the formula prescribed by Listing Rule 7.1.A.2 over a 12-month period and otherwise on the terms and conditions set out in the Explanatory Memorandum.”

FOR	66,710,498	91.51%
AGAINST	5,871,096	8.05%
ABSTAIN	182,212	-
OPEN	314,631	0.44%

Poll Voting

Please complete as instructed

Annexures – JORC Tables

MOUNT MASON MINERAL RESOURCE ESTIMATES

The following tables show the mineral resources estimates of the Mount Mason project in accordance with the JORC Code (2012) as at 30 June 2021. There has been no material between the date of the below statements and the end of the financial year. There have been no material changes since the last mineral resource estimate (*ASX announcement: 12 May 2021*).

Classification	Tonnes	Fe (%)	SiO ₂ (%)	Al ₂ O ₃ (%)	P (%)	S (%)	CaO (%)	MgO (%)	LOI (%)
Measured	4,800,000	60.3	7.37	2.90	0.05	0.01	0.03	0.04	2.63
Indicated	1,080,000	59.4	10.41	3.47	0.06	0.01	0.03	0.05	2.55
Inferred	320,000	58.4	14.10	4.37	0.08	0.01	0.03	0.06	2.88
Total Measured + Indicated	5,900,000	60.1	7.92	3.01	0.05	0.01	0.03	0.04	2.62

Annexures – JORC Tables

MOUNT IDA MINERAL RESOURCE ESTIMATES

The following tables show the mineral resources estimates of the Mount Ida project in accordance with the JORC Code (2012) as at 30 June 2021. There has been no material between the date of the below statements and the end of the financial year. There have been no material changes since the last mineral resource estimate (*ASX announcement: 12 May 2021*).

Central Zone based on Unweathered BIF with a 10% Magnetic Fe block grade cut-off											
Zone/Class	Material	Tonnes x10 ⁶	Fe(%)	SiO ₂ (%)	Al ₂ O ₃ (%)	CaO(%)	P(%)	S(%)	LOI(%)	MgO(%)	MnO(%)
Central Indicated	In situ total	1,062	30.23	48.47	1.88	2.70	0.07	0.28	-0.56	3.00	0.07
	In situ Magnetic	38.45%	25.64	2.64	0.02	0.07	0.01	0.09	-1.14	0.05	0.01
	Concentrate	409	66.69	6.86	0.05	0.17	0.01	0.23	-2.97	0.12	0.02
Central Inferred	In situ total	169	27.03	51.68	2.40	2.92	0.07	0.31	-0.43	3.33	0.10
	In situ Magnetic	32.12%	21.31	2.34	0.02	0.06	0.01	0.10	-0.96	0.05	0.01
	Concentrate	54	66.34	7.28	0.05	0.17	0.02	0.32	-2.98	0.15	0.02
Central Total	In situ total	1,231	29.79	48.91	1.95	2.73	0.07	0.28	-0.54	3.05	0.08
	In situ Magnetic	37.58%	35.05	2.60	0.02	0.06	0.01	0.09	-1.12	0.05	0.01
	Concentrate	463	66.65	6.91	0.05	0.17	0.01	0.24	-2.97	0.12	0.02

South and North Zone based on Unweathered BIF with a 10% Magnetic Fe block grade cut-off											
Zone/Class	Material	Tonnes x10 ⁶	Fe(%)	SiO ₂ (%)	Al ₂ O ₃ (%)	CaO(%)	P(%)	S(%)	LOI(%)	MgO(%)	MnO(%)
South Indicated	In situ total	567	28.63	49.92	2.35	3.47	0.07	0.36	-0.65	2.76	0.09
	In situ Magnetic	34.26%	22.93	2.26	0.02	0.07	0.01	0.17	-1.02	0.05	0.01
	Concentrate	194	66.93	6.60	0.06	0.21	0.02	0.50	-2.96	0.14	0.03
North Inferred	In situ total	48	31.63	48.82	1.54	2.20	0.07	0.12	-0.84	2.07	0.06
	In situ Magnetic	42.36%	28.32	2.97	0.01	0.07	0.01	0.04	-1.32	0.05	0.02
	Concentrate	20	66.85	7.02	0.03	0.16	0.02	0.09	-3.11	0.13	0.05
North & South Total	In situ total	615	28.86	49.84	2.28	3.37	0.07	0.34	-0.67	2.71	0.09
	In situ Magnetic	34.89%	23.35	2.32	0.02	0.07	0.01	0.16	-1.04	0.05	0.01
	Concentrate	214	66.92	6.64	0.05	0.20	0.02	0.46	-2.98	0.14	0.04

Annexures – JORC Tables

MOUNT IDA MINERAL RESOURCE ESTIMATES (continued)

Combined Central, South & North Zones based on Unweathered BIF with a 10% Magnetic Fe block grade cut-off											
Zone/Class	Material	Tonnes x10 ⁶	Fe (%)	SiO ₂ (%)	Al ₂ O ₃ (%)	CaO (%)	P (%)	S (%)	LOI (%)	MgO (%)	MnO (%)
Combined Indicated	In situ total	1,062	30.23	48.47	1.88	2.70	0.07	0.28	-0.56	3.00	0.07
	In situ Magnetic	38.45%	25.64	2.64	0.02	0.07	0.01	0.09	-1.14	0.05	0.01
	Concentrate	408	66.69	6.86	0.05	0.17	0.01	0.23	-2.97	0.12	0.02
Combined Inferred	In situ total	784	28.47	50.24	2.31	3.28	0.07	0.34	-0.62	2.84	0.09
	In situ Magnetic	34.29%	22.91	2.32	0.02	0.07	0.01	0.15	-1.02	0.05	0.01
	Concentrate	269	66.81	6.77	0.05	0.20	0.02	0.43	-2.98	0.14	0.03
Combined Total	In situ total	1,846	29.48	49.22	2.06	2.95	0.07	0.30	-0.58	2.94	0.08
	In situ Magnetic	36.68%	24.48	2.50	0.02	0.07	0.01	0.11	-1.09	0.05	0.01
	Concentrate	677	66.74	6.83	0.05	0.18	0.01	0.31	-2.97	0.13	0.03